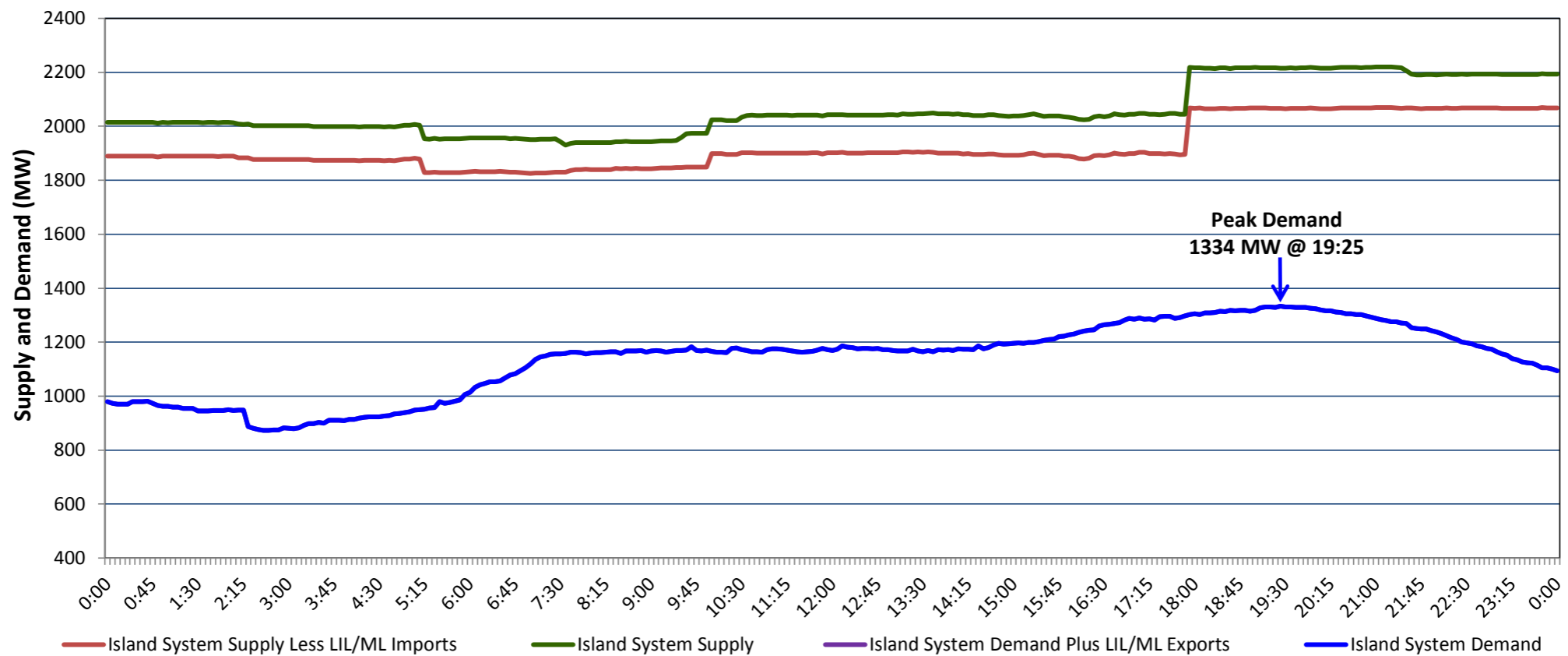


## Newfoundland Labrador Hydro (NLH) Supply and Demand Status Report Filed Friday, March 06, 2020

### Section 1 Island Interconnected System Supply, Demand & Exports Actual 24 Hour System Performance For Thursday, March 05, 2020



#### Supply Notes For March 05, 2020

1,2

- A As of 0658 hours, February 28, 2020, Holyrood Diesels available at 8 MW (10 MW).
- B At 0511 hours, March 05, 2020, Hardwoods Gas Turbine unavailable due to planned outage (50 MW).
- C At 1000 hours, March 05, 2020, Hardwoods Gas Turbine available (50 MW).
- D At 2054 hours, March 05, 2020, Holyrood Unit 2 available (170 MW).

### Section 2 Island Interconnected Supply and Demand

Fri, Mar 06, 2020	Island System Outlook <sup>3</sup>		Seven-Day Forecast	Temperature (°C)		Island System Daily Peak Demand (MW)	
				Morning	Evening	Forecast	Adjusted <sup>7</sup>
Available Island System Supply: <sup>5</sup>	2,199	MW	Friday, March 06, 2020	-3	-4	1,360	1,256
NLH Island Generation: <sup>4</sup>	1,690	MW	Saturday, March 07, 2020	-8	-5	1,425	1,321
NLH Island Power Purchases: <sup>6</sup>	150	MW	Sunday, March 08, 2020	-2	-4	1,355	1,251
Other Island Generation:	220	MW	Monday, March 09, 2020	-6	-12	1,570	1,464
ML/LIL Imports:	139	MW	Tuesday, March 10, 2020	-11	-8	1,615	1,508
Current St. John's Temperature & Windchill:	-3 °C	-12 °C	Wednesday, March 11, 2020	-6	-2	1,525	1,419
7-Day Island Peak Demand Forecast:	1,615	MW	Thursday, March 12, 2020	-3	-3	1,400	1,296

#### Supply Notes For March 06, 2020

3

- Notes:
1. Generation outages for running and corrective maintenance are included. These are not unusual for power system operations. They generally do not impact customer supply. The power system operators schedule outages to system equipment whenever possible to coincide with periods when customer demands are low and sufficient supply reserves are available. However, from time to time equipment outages are necessary and reserves may be impacted.
  2. Due to the Island system having no synchronous connections to the larger North American grid, when there is a sudden loss of large generating units there may be a requirement for some customer's load to be interrupted for short periods to bring generation output equal to customer demand. This automatic action of power system protection, referred to as under frequency load shedding (UFLS), is necessary to ensure the integrity and reliability of system equipment. Under frequency events have typically occurred 5 to 8 times per year on the Island Interconnected System and the resultant customer load interruptions are generally less than 30 minutes. With the activation of the Maritime Link frequency controller during the winter of 2018, UFLS events have occurred less frequently.
  3. As of 0800 Hours.
  4. Gross output including station service at Holyrood (24.5 MW) and improved NLH hydraulic output due to water levels (35 MW).
  5. Gross output from all Island sources (including Note 4).
  6. NLH Island Power Purchases include: CBPP Co-Gen, Nalcor Exploits, Rattle Brook, Star Lake, Wind Generation and capacity assistance (when applicable).
  7. Adjusted for curtailable load, market activities and the impact of voltage reduction when applicable.

### Section 3 Island Peak Demand Information Previous Day Actual Peak and Current Day Forecast Peak

Thu, Mar 05, 2020	Actual Island Peak Demand <sup>8</sup>	19:25	1,334 MW
Fri, Mar 06, 2020	Forecast Island Peak Demand		1,360 MW

- Notes: 8. Island Demand / LIL / ML Exports (where applicable) is supplied by NLH generation and purchases, plus generation owned and operated by Newfoundland Power and Corner Brook Pulp & Paper (Deer Lake Power, DLP).